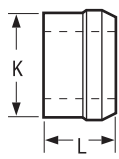
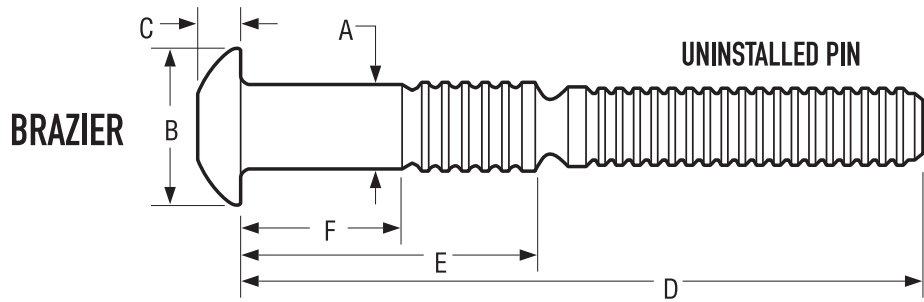
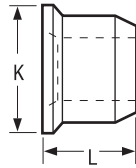


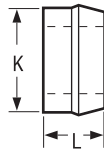
# C6L



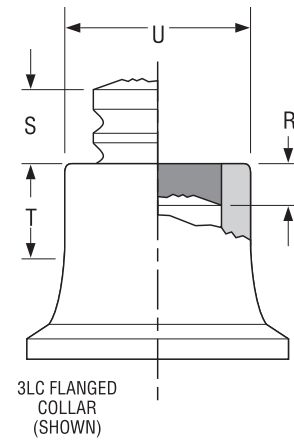
**STANDARD**



**FLANGED**



**LOW PROFILE**



# HUCK® INTERACTIVE CD ROM : DIMENSIONS

## C6L

Family	Headstyle	Material	Diameter	Grip	A Nominal Dia	Min	Max	Max	Max	Max	Max	Nominal	LC/2LC	LC/2LC	3LC	3LC	8LC	8LC
					mm	Hole Size	Hole Size	B	C	E	D	F	Min Grip	Max Grip	Min Grip	Max Grip	Min Grip	Max Grip
C6L	B	All Materials	6	2	4.8	5.0	5.2	9.9	3.2	10.6	39.1	1.6	1.6	4.8	0.4	3.6	1.6	7.1
C6L	B	All Materials	6	3	4.8	5.0	5.2	9.9	3.2	12.2	40.7	3.2	3.2	6.4	2.0	5.2	3.2	8.7
C6L	B	All Materials	6	4	4.8	5.0	5.2	9.9	3.2	13.7	42.3	4.8	4.8	7.9	3.6	6.8	4.8	10.3
C6L	B	All Materials	6	5	4.8	5.0	5.2	9.9	3.2	15.3	43.9	6.4	6.4	9.5	5.2	8.4	6.4	11.9
C6L	B	All Materials	6	6	4.8	5.0	5.2	9.9	3.2	16.9	45.4	7.9	7.9	11.1	6.8	9.9	7.9	13.5
C6L	B	All Materials	6	7	4.8	5.0	5.2	9.9	3.2	18.5	47.0	9.5	9.5	12.7	8.4	11.5	9.5	15.1
C6L	B	All Materials	6	8	4.8	5.0	5.2	9.9	3.2	20.1	48.6	11.1	11.1	14.3	9.9	13.1	11.1	16.7
C6L	B	All Materials	6	9	4.8	5.0	5.2	9.9	3.2	21.7	50.2	12.7	12.7	15.9	11.5	14.7	12.7	18.2
C6L	B	All Materials	6	10	4.8	5.0	5.2	9.9	3.2	23.3	51.8	14.3	14.3	17.5	13.1	16.3	14.3	19.8
C6L	B	All Materials	6	11	4.8	5.0	5.2	9.9	3.2	24.9	53.4	15.9	15.9	19.1	14.7	17.9	15.9	21.4
C6L	B	All Materials	6	12	4.8	5.0	5.2	9.9	3.2	26.4	55.0	17.5	17.5	20.6	16.3	19.5	17.5	23.0
C6L	B	All Materials	6	13	4.8	5.0	5.2	9.9	3.2	28.0	56.6	19.1	19.1	22.2	17.9	21.1	19.1	24.6
C6L	B	All Materials	6	14	4.8	5.0	5.2	9.9	3.2	29.6	58.1	20.6	20.6	23.8	19.5	22.6	20.6	26.2
C6L	B	All Materials	6	15	4.8	5.0	5.2	9.9	3.2	31.2	59.7	22.2	22.2	25.4	21.1	24.2	22.2	27.8
C6L	B	All Materials	6	16	4.8	5.0	5.2	9.9	3.2	32.8	61.3	23.8	23.8	27.0	22.6	25.8	23.8	29.4
C6L	B	All Materials	6	17	4.8	5.0	5.2	9.9	3.2	34.4	62.9	25.4	25.4	28.6	24.2	27.4	25.4	30.9
C6L	B	All Materials	6	18	4.8	5.0	5.2	9.9	3.2	36.0	64.5	27.0	27.0	30.2	25.8	29.0	27.0	32.5
C6L	B	All Materials	6	19	4.8	5.0	5.2	9.9	3.2	37.6	66.1	28.6	28.6	31.8	27.4	30.6	28.6	34.1
C6L	B	All Materials	6	20	4.8	5.0	5.2	9.9	3.2	39.1	67.7	30.2	30.2	33.3	29.0	32.2	30.2	35.7
C6L	B	All Materials	6	21	4.8	5.0	5.2	9.9	3.2	40.7	69.3	31.8	31.8	34.9	30.6	33.8	31.8	37.3
C6L	B	All Materials	6	22	4.8	5.0	5.2	9.9	3.2	42.3	70.8	33.3	33.3	36.5	32.2	35.3	33.3	38.9
C6L	B	All Materials	6	23	4.8	5.0	5.2	9.9	3.2	43.9	72.4	34.9	34.9	38.1	33.8	36.9	34.9	40.5
C6L	B	All Materials	6	24	4.8	5.0	5.2	9.9	3.2	45.5	74.0	36.5	36.5	39.7	35.3	38.5	36.5	42.1
C6L	B	All Materials	6	25	4.8	5.0	5.2	9.9	3.2	47.1	75.6	38.1	38.1	41.3	36.9	40.1	38.1	43.6
C6L	B	All Materials	6	26	4.8	5.0	5.2	9.9	3.2	48.7	77.2	39.7	39.7	42.9	38.5	41.7	39.7	45.2
C6L	B	All Materials	6	27	4.8	5.0	5.2	9.9	3.2	50.3	78.8	41.3	41.3	44.5	40.1	43.3	41.3	46.8
C6L	B	All Materials	6	28	4.8	5.0	5.2	9.9	3.2	51.8	80.4	42.9	42.9	46.0	41.7	44.9	42.9	48.4
C6L	B	All Materials	6	29	4.8	5.0	5.2	9.9	3.2	53.4	82.0	44.5	44.5	47.6	43.3	46.5	44.5	50.0
C6L	B	All Materials	6	30	4.8	5.0	5.2	9.9	3.2	55.0	83.5	46.0	46.0	49.2	44.9	48.0	46.0	51.6
C6L	B	All Materials	6	31	4.8	5.0	5.2	9.9	3.2	56.6	85.1	47.6	47.6	50.8	46.5	49.6	47.6	53.2
C6L	B	All Materials	6	32	4.8	5.0	5.2	9.9	3.2	58.2	86.7	49.2	49.2	52.4	48.0	51.2	49.2	54.8
C6L	B	All Materials	8	2	6.4	6.6	6.8	13.2	3.9	12.9	42.0	1.6	1.6	4.8	0.0	3.2	1.6	7.8
C6L	B	All Materials	8	3	6.4	6.6	6.8	13.2	3.9	14.5	43.6	3.2	3.2	6.4	1.6	4.8	3.2	9.4
C6L	B	All Materials	8	4	6.4	6.6	6.8	13.2	3.9	16.1	45.2	4.8	4.8	7.9	3.2	6.3	4.8	10.9
C6L	B	All Materials	8	5	6.4	6.6	6.8	13.2	3.9	17.6	46.8	6.4	6.4	9.5	4.8	7.9	6.4	12.5
C6L	B	All Materials	8	6	6.4	6.6	6.8	13.2	3.9	19.2	48.4	7.9	7.9	11.1	6.3	9.5	7.9	14.1
C6L	B	All Materials	8	7	6.4	6.6	6.8	13.2	3.9	20.8	50.0	9.5	9.5	12.7	7.9	11.1	9.5	15.7
C6L	B	All Materials	8	8	6.4	6.6	6.8	13.2	3.9	22.4	51.6	11.1	11.1	14.3	9.5	12.7	11.1	17.3
C6L	B	All Materials	8	9	6.4	6.6	6.8	13.2	3.9	24.0	53.2	12.7	12.7	15.9	11.1	14.3	12.7	18.9
C6L	B	All Materials	8	10	6.4	6.6	6.8	13.2	3.9	25.6	54.7	14.3	14.3	17.5	12.7	15.9	14.3	20.5
C6L	B	All Materials	8	11	6.4	6.6	6.8	13.2	3.9	27.2	56.3	15.9	15.9	19.1	14.3	17.5	15.9	22.1
C6L	B	All Materials	8	12	6.4	6.6	6.8	13.2	3.9	28.8	57.9	17.5	17.5	20.6	15.9	19.0	17.5	23.6
C6L	B	All Materials	8	13	6.4	6.6	6.8	13.2	3.9	30.3	59.5	19.1	19.1	22.2	17.5	20.6	19.1	25.2
C6L	B	All Materials	8	14	6.4	6.6	6.8	13.2	3.9	31.9	61.1	20.6	20.6	23.8	19.0	22.2	20.6	26.8
C6L	B	All Materials	8	15	6.4	6.6	6.8	13.2	3.9	33.5	62.7	22.2	22.2	25.4	20.6	23.8	22.2	28.4
C6L	B	All Materials	8	16	6.4	6.6	6.8	13.2	3.9	35.1	64.3	23.8	23.8	27.0	22.2	25.4	23.8	30.0
C6L	B	All Materials	8	17	6.4	6.6	6.8	13.2	3.9	36.7	65.9	25.4	25.4	28.6	23.8	27.0	25.4	31.6
C6L	B	All Materials	8	18	6.4	6.6	6.8	13.2	3.9	38.3	67.4	27.0	27.0	30.2	25.4	28.6	27.0	33.2
C6L	B	All Materials	8	19	6.4	6.6	6.8	13.2	3.9	39.9	69.0	28.6	28.6	31.8	27.0	30.2	28.6	34.8
C6L	B	All Materials	8	20	6.4	6.6	6.8	13.2	3.9	41.5	70.6	30.2	30.2	33.3	28.6	31.7	30.2	36.3
C6L	B	All Materials	8	21	6.4	6.6	6.8	13.2	3.9	43.0	72.2	31.8	31.8	34.9	30.2	33.3	31.8	37.9

# HUCK® INTERACTIVE CD ROM : DIMENSIONS

## C6L

Family	Headstyle	Material	Diameter	Grip	A Nominal Dia	Min Hole Size	Max Hole Size	Max B	Max C	Max E	Max D	Nominal F	LC/2LC Min Grip	LC/2LC Max Grip	3LC Min Grip	3LC Max Grip	8LC Min Grip	8LC Max Grip
			mm	mm	mm	mm	mm	mm	mm	mm	mm	mm	mm	mm	mm	mm	mm	mm
C6L	B	All Materials	8	22	6.4	6.6	6.8	13.2	3.9	44.6	73.8	33.3	33.3	36.5	31.7	34.9	33.3	39.5
C6L	B	All Materials	8	23	6.4	6.6	6.8	13.2	3.9	46.2	75.4	34.9	34.9	38.1	33.3	36.5	34.9	41.1
C6L	B	All Materials	8	24	6.4	6.6	6.8	13.2	3.9	47.8	77.0	36.5	36.5	39.7	34.9	38.1	36.5	42.7
C6L	B	All Materials	8	25	6.4	6.6	6.8	13.2	3.9	49.4	78.6	38.1	38.1	41.3	36.5	39.7	38.1	44.3
C6L	B	All Materials	8	26	6.4	6.6	6.8	13.2	3.9	51.0	80.1	39.7	39.7	42.9	38.1	41.3	39.7	45.9
C6L	B	All Materials	8	27	6.4	6.6	6.8	13.2	3.9	52.6	81.7	41.3	41.3	44.5	39.7	42.9	41.3	47.5
C6L	B	All Materials	8	28	6.4	6.6	6.8	13.2	3.9	54.2	83.3	42.9	42.9	46.0	41.3	44.4	42.9	49.0
C6L	B	All Materials	8	29	6.4	6.6	6.8	13.2	3.9	55.7	84.9	44.5	44.5	47.6	42.9	46.0	44.5	50.6
C6L	B	All Materials	8	30	6.4	6.6	6.8	13.2	3.9	57.3	86.5	46.0	46.0	49.2	44.4	47.6	46.0	52.2
C6L	B	All Materials	8	31	6.4	6.6	6.8	13.2	3.9	58.9	88.1	47.6	47.6	50.8	46.0	49.2	47.6	53.8
C6L	B	All Materials	8	32	6.4	6.6	6.8	13.2	3.9	60.5	89.7	49.2	49.2	52.4	47.6	50.8	49.2	55.4
C6L	B	All Materials	10	4	7.9	8.2	8.3	16.5	5.1	19.7	51.9	3.2	3.2	9.5	1.2	7.5	3.2	12.7
C6L	B	All Materials	10	6	7.9	8.2	8.3	16.5	5.1	22.9	55.1	6.4	6.4	12.7	4.4	10.7	6.4	15.9
C6L	B	All Materials	10	8	7.9	8.2	8.3	16.5	5.1	26.1	58.3	9.5	9.5	15.9	7.5	13.9	9.5	19.1
C6L	B	All Materials	10	10	7.9	8.2	8.3	16.5	5.1	29.2	61.5	12.7	12.7	19.1	10.7	17.1	12.7	22.2
C6L	B	All Materials	10	12	7.9	8.2	8.3	16.5	5.1	32.4	64.6	15.9	15.9	22.2	13.9	20.2	15.9	25.4
C6L	B	All Materials	10	14	7.9	8.2	8.3	16.5	5.1	35.6	67.8	19.1	19.1	25.4	17.1	23.4	19.1	28.6
C6L	B	All Materials	10	16	7.9	8.2	8.3	16.5	5.1	38.8	71.0	22.2	22.2	28.6	20.2	26.6	22.2	31.8
C6L	B	All Materials	10	18	7.9	8.2	8.3	16.5	5.1	41.9	74.2	25.4	25.4	31.8	23.4	29.8	25.4	34.9
C6L	B	All Materials	10	20	7.9	8.2	8.3	16.5	5.1	45.1	77.3	28.6	28.6	34.9	26.6	32.9	28.6	38.1
C6L	B	All Materials	10	22	7.9	8.2	8.3	16.5	5.1	48.3	80.5	31.8	31.8	38.1	29.8	36.1	31.8	41.3
C6L	B	All Materials	10	24	7.9	8.2	8.3	16.5	5.1	51.5	83.7	34.9	34.9	41.3	32.9	39.3	34.9	44.5
C6L	B	All Materials	10	26	7.9	8.2	8.3	16.5	5.1	54.6	86.9	38.1	38.1	44.5	36.1	42.5	38.1	47.6
C6L	B	All Materials	10	28	7.9	8.2	8.3	16.5	5.1	57.8	90.0	41.3	41.3	47.6	39.3	45.6	41.3	50.8
C6L	B	All Materials	10	30	7.9	8.2	8.3	16.5	5.1	61.0	93.2	44.5	44.5	50.8	42.5	48.8	44.5	54.0
C6L	B	All Materials	10	32	7.9	8.2	8.3	16.5	5.1	64.2	96.4	47.6	47.6	54.0	45.6	52.0	47.6	57.2
C6L	B	All Materials	12	4	9.5	9.8	9.9	19.8	6.3	21.7	57.3	3.2	3.2	9.5	0.8	7.1	3.2	13.2
C6L	B	All Materials	12	6	9.5	9.8	9.9	19.8	6.3	24.8	60.5	6.4	6.4	12.7	4.0	10.3	6.4	16.3
C6L	B	All Materials	12	8	9.5	9.8	9.9	19.8	6.3	28.0	63.7	9.5	9.5	15.9	7.1	13.5	9.5	19.5
C6L	B	All Materials	12	10	9.5	9.8	9.9	19.8	6.3	31.2	66.8	12.7	12.7	19.1	10.3	16.7	12.7	22.7
C6L	B	All Materials	12	12	9.5	9.8	9.9	19.8	6.3	34.4	70.0	15.9	15.9	22.2	13.5	19.8	15.9	25.9
C6L	B	All Materials	12	14	9.5	9.8	9.9	19.8	6.3	37.5	73.2	19.1	19.1	25.4	16.7	23.0	19.1	29.0
C6L	B	All Materials	12	16	9.5	9.8	9.9	19.8	6.3	40.7	76.4	22.2	22.2	28.6	19.8	26.2	22.2	32.2
C6L	B	All Materials	12	18	9.5	9.8	9.9	19.8	6.3	43.9	79.5	25.4	25.4	31.8	23.0	29.4	25.4	35.4
C6L	B	All Materials	12	20	9.5	9.8	9.9	19.8	6.3	47.1	82.7	28.6	28.6	34.9	26.2	32.5	28.6	38.6
C6L	B	All Materials	12	22	9.5	9.8	9.9	19.8	6.3	50.2	85.9	31.8	31.8	38.1	29.4	35.7	31.8	41.7
C6L	B	All Materials	12	24	9.5	9.8	9.9	19.8	6.3	53.4	89.1	34.9	34.9	41.3	32.5	38.9	34.9	44.9
C6L	B	All Materials	12	26	9.5	9.8	9.9	19.8	6.3	56.6	92.2	38.1	38.1	44.5	35.7	42.1	38.1	48.1
C6L	B	All Materials	12	28	9.5	9.8	9.9	19.8	6.3	59.8	95.4	41.3	41.3	47.6	38.9	45.2	41.3	51.3
C6L	B	All Materials	12	30	9.5	9.8	9.9	19.8	6.3	62.9	98.6	44.5	44.5	50.8	42.1	48.4	44.5	54.4
C6L	B	All Materials	12	32	9.5	9.8	9.9	19.8	6.3	66.1	101.8	47.6	47.6	54.0	45.2	51.6	47.6	57.6
C6L	T	All Materials	6	2	4.8	5.0	5.2	11.9	2.3	10.6	39.1	1.6	1.6	4.8	0.4	3.6	1.6	7.1
C6L	T	All Materials	6	3	4.8	5.0	5.2	11.9	2.3	82.9	40.7	3.2	3.2	6.4	2.0	5.2	3.2	8.7
C6L	T	All Materials	6	4	4.8	5.0	5.2	11.9	2.3	84.5	42.3	4.8	4.8	7.9	3.6	6.8	4.8	10.3
C6L	T	All Materials	6	5	4.8	5.0	5.2	11.9	2.3	86.0	43.9	6.4	6.4	9.5	5.2	8.4	6.4	11.9
C6L	T	All Materials	6	6	4.8	5.0	5.2	11.9	2.3	87.6	45.4	7.9	7.9	11.1	6.8	9.9	7.9	13.5
C6L	T	All Materials	6	7	4.8	5.0	5.2	11.9	2.3	89.2	47.0	9.5	9.5	12.7	8.4	11.5	9.5	15.1
C6L	T	All Materials	6	8	4.8	5.0	5.2	11.9	2.3	90.8	48.6	11.1	11.1	14.3	9.9	13.1	11.1	16.7
C6L	T	All Materials	6	9	4.8	5.0	5.2	11.9	2.3	92.4	50.2	12.7	12.7	15.9	11.5	14.7	12.7	18.2
C6L	T	All Materials	6	10	4.8	5.0	5.2	11.9	2.3	94.0	51.8	14.3	14.3	17.5	13.1	16.3	14.3	19.8
C6L	T	All Materials	6	11	4.8	5.0	5.2	11.9	2.3	95.6	53.4	15.9	15.9	19.1	14.7	17.9	15.9	21.4
C6L	T	All Materials	6	12	4.8	5.0	5.2	11.9	2.3	97.2	55.0	17.5	17.5	20.6	16.3	19.5	17.5	23.0

# HUCK® INTERACTIVE CD ROM : DIMENSIONS

## C6L

Family	Headstyle	Material	Diameter	Grip	A Nominal Dia	Min	Max	Max	Max	Max	Max	Nominal	LC/2LC	LC/2LC	3LC	3LC	8LC	8LC
					mm	Hole Size	Hole Size	B	C	E	D	F	Min Grip	Max Grip	Min Grip	Max Grip	Min Grip	Max Grip
C6L	T	All Materials	6	13	4.8	5.0	5.2	11.9	2.3	98.7	56.6	19.1	19.1	22.2	17.9	21.1	19.1	24.6
C6L	T	All Materials	6	14	4.8	5.0	5.2	11.9	2.3	100.3	58.1	20.6	20.6	23.8	19.5	22.6	20.6	26.2
C6L	T	All Materials	6	15	4.8	5.0	5.2	11.9	2.3	101.9	59.7	22.2	22.2	25.4	21.1	24.2	22.2	27.8
C6L	T	All Materials	6	16	4.8	5.0	5.2	11.9	2.3	103.5	61.3	23.8	23.8	27.0	22.6	25.8	23.8	29.4
C6L	T	All Materials	6	17	4.8	5.0	5.2	11.9	2.3	105.1	62.9	25.4	25.4	28.6	24.2	27.4	25.4	30.9
C6L	T	All Materials	6	18	4.8	5.0	5.2	11.9	2.3	106.7	64.5	27.0	27.0	30.2	25.8	29.0	27.0	32.5
C6L	T	All Materials	6	19	4.8	5.0	5.2	11.9	2.3	108.3	66.1	28.6	28.6	31.8	27.4	30.6	28.6	34.1
C6L	T	All Materials	6	20	4.8	5.0	5.2	11.9	2.3	109.9	67.7	30.2	30.2	33.3	29.0	32.2	30.2	35.7
C6L	T	All Materials	6	21	4.8	5.0	5.2	11.9	2.3	111.4	69.3	31.8	31.8	34.9	30.6	33.8	31.8	37.3
C6L	T	All Materials	6	22	4.8	5.0	5.2	11.9	2.3	113.0	70.8	33.3	33.3	36.5	32.2	35.3	33.3	38.9
C6L	T	All Materials	6	23	4.8	5.0	5.2	11.9	2.3	114.6	72.4	34.9	34.9	38.1	33.8	36.9	34.9	40.5
C6L	T	All Materials	6	24	4.8	5.0	5.2	11.9	2.3	116.2	74.0	36.5	36.5	39.7	35.3	38.5	36.5	42.1
C6L	T	All Materials	6	25	4.8	5.0	5.2	11.9	2.3	117.8	75.6	38.1	38.1	41.3	36.9	40.1	38.1	43.6
C6L	T	All Materials	6	26	4.8	5.0	5.2	11.9	2.3	119.4	77.2	39.7	39.7	42.9	38.5	41.7	39.7	45.2
C6L	T	All Materials	6	27	4.8	5.0	5.2	11.9	2.3	121.0	78.8	41.3	41.3	44.5	40.1	43.3	41.3	46.8
C6L	T	All Materials	6	28	4.8	5.0	5.2	11.9	2.3	122.6	80.4	42.9	42.9	46.0	41.7	44.9	42.9	48.4
C6L	T	All Materials	6	29	4.8	5.0	5.2	11.9	2.3	124.1	82.0	44.5	44.5	47.6	43.3	46.5	44.5	50.0
C6L	T	All Materials	6	30	4.8	5.0	5.2	11.9	2.3	125.7	83.5	46.0	46.0	49.2	44.9	48.0	46.0	51.6
C6L	T	All Materials	6	31	4.8	5.0	5.2	11.9	2.3	127.3	85.1	47.6	47.6	50.8	46.5	49.6	47.6	53.2
C6L	T	All Materials	6	32	4.8	5.0	5.2	11.9	2.3	128.9	86.7	49.2	49.2	52.4	48.0	51.2	49.2	54.8
C6L	T	All Materials	8	2	6.4	6.6	6.8	15.1	3.0	12.9	42.0	1.6	1.6	4.8	0.0	3.2	1.6	7.8
C6L	T	All Materials	8	3	6.4	6.6	6.8	15.1	3.0	99.6	43.6	3.2	3.2	6.4	1.6	4.8	3.2	9.4
C6L	T	All Materials	8	4	6.4	6.6	6.8	15.1	3.0	101.2	45.2	4.8	4.8	7.9	3.2	6.3	4.8	10.9
C6L	T	All Materials	8	5	6.4	6.6	6.8	15.1	3.0	102.8	46.8	6.4	6.4	9.5	4.8	7.9	6.4	12.5
C6L	T	All Materials	8	6	6.4	6.6	6.8	15.1	3.0	104.4	48.4	7.9	7.9	11.1	6.3	9.5	7.9	14.1
C6L	T	All Materials	8	7	6.4	6.6	6.8	15.1	3.0	106.0	50.0	9.5	9.5	12.7	7.9	11.1	9.5	15.7
C6L	T	All Materials	8	8	6.4	6.6	6.8	15.1	3.0	107.6	51.6	11.1	11.1	14.3	9.5	12.7	11.1	17.3
C6L	T	All Materials	8	9	6.4	6.6	6.8	15.1	3.0	109.2	53.2	12.7	12.7	15.9	11.1	14.3	12.7	18.9
C6L	T	All Materials	8	10	6.4	6.6	6.8	15.1	3.0	110.7	54.7	14.3	14.3	17.5	12.7	15.9	14.3	20.5
C6L	T	All Materials	8	11	6.4	6.6	6.8	15.1	3.0	112.3	56.3	15.9	15.9	19.1	14.3	17.5	15.9	22.1
C6L	T	All Materials	8	12	6.4	6.6	6.8	15.1	3.0	113.9	57.9	17.5	17.5	20.6	15.9	19.0	17.5	23.6
C6L	T	All Materials	8	13	6.4	6.6	6.8	15.1	3.0	115.5	59.5	19.1	19.1	22.2	17.5	20.6	19.1	25.2
C6L	T	All Materials	8	14	6.4	6.6	6.8	15.1	3.0	117.1	61.1	20.6	20.6	23.8	19.0	22.2	20.6	26.8
C6L	T	All Materials	8	15	6.4	6.6	6.8	15.1	3.0	118.7	62.7	22.2	22.2	25.4	20.6	23.8	22.2	28.4
C6L	T	All Materials	8	16	6.4	6.6	6.8	15.1	3.0	120.3	64.3	23.8	23.8	27.0	22.2	25.4	23.8	30.0
C6L	T	All Materials	8	17	6.4	6.6	6.8	15.1	3.0	121.9	65.9	25.4	25.4	28.6	23.8	27.0	25.4	31.6
C6L	T	All Materials	8	18	6.4	6.6	6.8	15.1	3.0	123.4	67.4	27.0	27.0	30.2	25.4	28.6	27.0	33.2
C6L	T	All Materials	8	19	6.4	6.6	6.8	15.1	3.0	125.0	69.0	28.6	28.6	31.8	27.0	30.2	28.6	34.8
C6L	T	All Materials	8	20	6.4	6.6	6.8	15.1	3.0	126.6	70.6	30.2	30.2	33.3	28.6	31.7	30.2	36.3
C6L	T	All Materials	8	21	6.4	6.6	6.8	15.1	3.0	128.2	72.2	31.8	31.8	34.9	30.2	33.3	31.8	37.9
C6L	T	All Materials	8	22	6.4	6.6	6.8	15.1	3.0	129.8	73.8	33.3	33.3	36.5	31.7	34.9	33.3	39.5
C6L	T	All Materials	8	23	6.4	6.6	6.8	15.1	3.0	131.4	75.4	34.9	34.9	38.1	33.3	36.5	34.9	41.1
C6L	T	All Materials	8	24	6.4	6.6	6.8	15.1	3.0	133.0	77.0	36.5	36.5	39.7	34.9	38.1	36.5	42.7
C6L	T	All Materials	8	25	6.4	6.6	6.8	15.1	3.0	134.6	78.6	38.1	38.1	41.3	36.5	39.7	38.1	44.3
C6L	T	All Materials	8	26	6.4	6.6	6.8	15.1	3.0	136.1	80.1	39.7	39.7	42.9	38.1	41.3	39.7	45.9
C6L	T	All Materials	8	27	6.4	6.6	6.8	15.1	3.0	137.7	81.7	41.3	41.3	44.5	39.7	42.9	41.3	47.5
C6L	T	All Materials	8	28	6.4	6.6	6.8	15.1	3.0	139.3	83.3	42.9	42.9	46.0	41.3	44.4	42.9	49.0
C6L	T	All Materials	8	29	6.4	6.6	6.8	15.1	3.0	140.9	84.9	44.5	44.5	47.6	42.9	46.0	44.5	50.6
C6L	T	All Materials	8	30	6.4	6.6	6.8	15.1	3.0	142.5	86.5	46.0	46.0	49.2	44.4	47.6	46.0	52.2
C6L	T	All Materials	8	31	6.4	6.6	6.8	15.1	3.0	144.1	88.1	47.6	47.6	50.8	46.0	49.2	47.6	53.8
C6L	T	All Materials	8	32	6.4	6.6	6.8	15.1	3.0	145.7	89.7	49.2	49.2	52.4	47.6	50.8	49.2	55.4

# HUCK® INTERACTIVE CD ROM : DIMENSIONS

## C6L

Family	Headstyle	Material	Diameter	Grip	A Nominal Dia mm	Min Hole Size mm	Max Hole Size mm	Max B mm	Max C mm	Max E mm	Max D mm	Nominal F mm	LC/2LC Min Grip mm	LC/2LC Max Grip mm	3LC Min Grip mm	3LC Max Grip mm	8LC Min Grip mm	8LC Max Grip mm
C6L	T	All Materials	10	4	7.9	8.2	8.3	20.2	3.6	19.7	51.9	3.2	3.2	9.5	1.2	7.5	3.2	12.7
C6L	T	All Materials	10	6	7.9	8.2	8.3	20.2	3.6	22.9	55.1	6.4	6.4	12.7	4.4	10.7	6.4	15.9
C6L	T	All Materials	10	8	7.9	8.2	8.3	20.2	3.6	26.1	58.3	9.5	9.5	15.9	7.5	13.9	9.5	19.1
C6L	T	All Materials	10	10	7.9	8.2	8.3	20.2	3.6	29.2	61.5	12.7	12.7	19.1	10.7	17.1	12.7	22.2
C6L	T	All Materials	10	12	7.9	8.2	8.3	20.2	3.6	32.4	64.6	15.9	15.9	22.2	13.9	20.2	15.9	25.4
C6L	T	All Materials	10	14	7.9	8.2	8.3	20.2	3.6	35.6	67.8	19.1	19.1	25.4	17.1	23.4	19.1	28.6
C6L	T	All Materials	10	16	7.9	8.2	8.3	20.2	3.6	38.8	71.0	22.2	22.2	28.6	20.2	26.6	22.2	31.8
C6L	T	All Materials	10	18	7.9	8.2	8.3	20.2	3.6	41.9	74.2	25.4	25.4	31.8	23.4	29.8	25.4	34.9
C6L	T	All Materials	10	20	7.9	8.2	8.3	20.2	3.6	45.1	77.3	28.6	28.6	34.9	26.6	32.9	28.6	38.1
C6L	T	All Materials	10	22	7.9	8.2	8.3	20.2	3.6	48.3	80.5	31.8	31.8	38.1	29.8	36.1	31.8	41.3
C6L	T	All Materials	10	24	7.9	8.2	8.3	20.2	3.6	51.5	83.7	34.9	34.9	41.3	32.9	39.3	34.9	44.5
C6L	T	All Materials	10	26	7.9	8.2	8.3	20.2	3.6	54.6	86.9	38.1	38.1	44.5	36.1	42.5	38.1	47.6
C6L	T	All Materials	10	28	7.9	8.2	8.3	20.2	3.6	57.8	90.0	41.3	41.3	47.6	39.3	45.6	41.3	50.8
C6L	T	All Materials	10	30	7.9	8.2	8.3	20.2	3.6	61.0	93.2	44.5	44.5	50.8	42.5	48.8	44.5	54.0
C6L	T	All Materials	10	32	7.9	8.2	8.3	20.2	3.6	64.2	96.4	47.6	47.6	54.0	45.6	52.0	47.6	57.2
C6L	T	All Materials	12	4	9.5	9.8	9.9	23.4	4.3	21.7	57.3	3.2	3.2	9.5	0.8	7.1	3.2	13.2
C6L	T	All Materials	12	6	9.5	9.8	9.9	23.4	4.3	24.8	60.5	6.4	6.4	12.7	4.0	10.3	6.4	16.3
C6L	T	All Materials	12	8	9.5	9.8	9.9	23.4	4.3	28.0	63.7	9.5	9.5	15.9	7.1	13.5	9.5	19.5
C6L	T	All Materials	12	10	9.5	9.8	9.9	23.4	4.3	31.2	66.8	12.7	12.7	19.1	10.3	16.7	12.7	22.7
C6L	T	All Materials	12	12	9.5	9.8	9.9	23.4	4.3	34.4	70.0	15.9	15.9	22.2	13.5	19.8	15.9	25.9
C6L	T	All Materials	12	14	9.5	9.8	9.9	23.4	4.3	37.5	73.2	19.1	19.1	25.4	16.7	23.0	19.1	29.0
C6L	T	All Materials	12	16	9.5	9.8	9.9	23.4	4.3	40.7	76.4	22.2	22.2	28.6	19.8	26.2	22.2	32.2
C6L	T	All Materials	12	18	9.5	9.8	9.9	23.4	4.3	43.9	79.5	25.4	25.4	31.8	23.0	29.4	25.4	35.4
C6L	T	All Materials	12	20	9.5	9.8	9.9	23.4	4.3	47.1	82.7	28.6	28.6	34.9	26.2	32.5	28.6	38.6
C6L	T	All Materials	12	22	9.5	9.8	9.9	23.4	4.3	50.2	85.9	31.8	31.8	38.1	29.4	35.7	31.8	41.7
C6L	T	All Materials	12	24	9.5	9.8	9.9	23.4	4.3	53.4	89.1	34.9	34.9	41.3	32.5	38.9	34.9	44.9
C6L	T	All Materials	12	26	9.5	9.8	9.9	23.4	4.3	56.6	92.2	38.1	38.1	44.5	35.7	42.1	38.1	48.1
C6L	T	All Materials	12	28	9.5	9.8	9.9	23.4	4.3	59.8	95.4	41.3	41.3	47.6	38.9	45.2	41.3	51.3
C6L	T	All Materials	12	30	9.5	9.8	9.9	23.4	4.3	62.9	98.6	44.5	44.5	50.8	42.1	48.4	44.5	54.4
C6L	T	All Materials	12	32	9.5	9.8	9.9	23.4	4.3	66.1	101.8	47.6	47.6	54.0	45.2	51.6	47.6	57.6
C6L	90	All Materials	6	3	4.8	5.0	5.2	9.1	2.2	12.2	39.9	3.2	3.2	6.4	2.0	5.2	3.2	8.7
C6L	90	All Materials	6	4	4.8	5.0	5.2	9.1	2.2	13.7	41.5	4.8	4.8	7.9	3.6	6.8	4.8	10.3
C6L	90	All Materials	6	5	4.8	5.0	5.2	9.1	2.2	15.3	43.1	6.4	6.4	9.5	5.2	8.4	6.4	11.9
C6L	90	All Materials	6	6	4.8	5.0	5.2	9.1	2.2	16.9	44.7	7.9	7.9	11.1	6.8	9.9	7.9	13.5
C6L	90	All Materials	6	7	4.8	5.0	5.2	9.1	2.2	18.5	46.3	9.5	9.5	12.7	8.4	11.5	9.5	15.1
C6L	90	All Materials	6	8	4.8	5.0	5.2	9.1	2.2	20.1	47.9	11.1	11.1	14.3	9.9	13.1	11.1	16.7
C6L	90	All Materials	6	9	4.8	5.0	5.2	9.1	2.2	21.7	49.5	12.7	12.7	15.9	11.5	14.7	12.7	18.2
C6L	90	All Materials	6	10	4.8	5.0	5.2	9.1	2.2	23.3	51.0	14.3	14.3	17.5	13.1	16.3	14.3	19.8
C6L	90	All Materials	6	11	4.8	5.0	5.2	9.1	2.2	24.9	52.6	15.9	15.9	19.1	14.7	17.9	15.9	21.4
C6L	90	All Materials	6	12	4.8	5.0	5.2	9.1	2.2	26.4	54.2	17.5	17.5	20.6	16.3	19.5	17.5	23.0
C6L	90	All Materials	6	13	4.8	5.0	5.2	9.1	2.2	28.0	55.8	19.1	19.1	22.2	17.9	21.1	19.1	24.6
C6L	90	All Materials	6	14	4.8	5.0	5.2	9.1	2.2	29.6	57.4	20.6	20.6	23.8	19.5	22.6	20.6	26.2
C6L	90	All Materials	6	15	4.8	5.0	5.2	9.1	2.2	31.2	59.0	22.2	22.2	25.4	21.1	24.2	22.2	27.8
C6L	90	All Materials	6	16	4.8	5.0	5.2	9.1	2.2	32.8	60.6	23.8	23.8	27.0	22.6	25.8	23.8	29.4
C6L	90	All Materials	6	17	4.8	5.0	5.2	9.1	2.2	34.4	62.2	25.4	25.4	28.6	24.2	27.4	25.4	30.9
C6L	90	All Materials	6	18	4.8	5.0	5.2	9.1	2.2	36.0	63.7	27.0	27.0	30.2	25.8	29.0	27.0	32.5
C6L	90	All Materials	6	19	4.8	5.0	5.2	9.1	2.2	37.6	65.3	28.6	28.6	31.8	27.4	30.6	28.6	34.1
C6L	90	All Materials	6	20	4.8	5.0	5.2	9.1	2.2	39.1	66.9	30.2	30.2	33.3	29.0	32.2	30.2	35.7
C6L	90	All Materials	6	21	4.8	5.0	5.2	9.1	2.2	40.7	68.5	31.8	31.8	34.9	30.6	33.8	31.8	37.3
C6L	90	All Materials	6	22	4.8	5.0	5.2	9.1	2.2	42.3	70.1	33.3	33.3	36.5	32.2	35.3	33.3	38.9
C6L	90	All Materials	6	23	4.8	5.0	5.2	9.1	2.2	43.9	71.7	34.9	34.9	38.1	33.8	36.9	34.9	40.5

# HUCK® INTERACTIVE CD ROM : DIMENSIONS

## C6L

Family	Headstyle	Material	Diameter	Grip	A Nominal Dia mm	Min Hole Size mm	Max Hole Size mm	Max B mm	Max C mm	Max E mm	Max D mm	Nominal F mm	LC/2LC Min Grip mm	LC/2LC Max Grip mm	3LC Min Grip mm	3LC Max Grip mm	8LC Min Grip mm	8LC Max Grip mm
C6L	90	All Materials	6	24	4.8	5.0	5.2	9.1	2.2	45.5	73.3	36.5	36.5	39.7	35.3	38.5	36.5	42.1
C6L	90	All Materials	6	25	4.8	5.0	5.2	9.1	2.2	47.1	74.9	38.1	38.1	41.3	36.9	40.1	38.1	43.6
C6L	90	All Materials	6	26	4.8	5.0	5.2	9.1	2.2	48.7	76.4	39.7	39.7	42.9	38.5	41.7	39.7	45.2
C6L	90	All Materials	6	27	4.8	5.0	5.2	9.1	2.2	50.3	78.0	41.3	41.3	44.5	40.1	43.3	41.3	46.8
C6L	90	All Materials	6	28	4.8	5.0	5.2	9.1	2.2	51.8	79.6	42.9	42.9	46.0	41.7	44.9	42.9	48.4
C6L	90	All Materials	6	29	4.8	5.0	5.2	9.1	2.2	53.4	81.2	44.5	44.5	47.6	43.3	46.5	44.5	50.0
C6L	90	All Materials	6	30	4.8	5.0	5.2	9.1	2.2	55.0	82.8	46.0	46.0	49.2	44.9	48.0	46.0	51.6
C6L	90	All Materials	6	31	4.8	5.0	5.2	9.1	2.2	56.6	84.4	47.6	47.6	50.8	46.5	49.6	47.6	53.2
C6L	90	All Materials	6	32	4.8	5.0	5.2	9.1	2.2	58.2	86.0	49.2	49.2	52.4	48.0	51.2	49.2	54.8
C6L	90	All Materials	8	3	6.4	6.6	6.8	12.1	2.9	14.5	43.1	3.2	3.2	6.4	1.6	4.8	3.2	9.4
C6L	90	All Materials	8	4	6.4	6.6	6.8	12.1	2.9	16.1	44.7	4.8	4.8	7.9	3.2	6.3	4.8	10.9
C6L	90	All Materials	8	5	6.4	6.6	6.8	12.1	2.9	17.6	46.3	6.4	6.4	9.5	4.8	7.9	6.4	12.5
C6L	90	All Materials	8	6	6.4	6.6	6.8	12.1	2.9	19.2	47.9	7.9	7.9	11.1	6.3	9.5	7.9	14.1
C6L	90	All Materials	8	7	6.4	6.6	6.8	12.1	2.9	20.8	49.5	9.5	9.5	12.7	7.9	11.1	9.5	15.7
C6L	90	All Materials	8	8	6.4	6.6	6.8	12.1	2.9	22.4	51.0	11.1	11.1	14.3	9.5	12.7	11.1	17.3
C6L	90	All Materials	8	9	6.4	6.6	6.8	12.1	2.9	24.0	52.6	12.7	12.7	15.9	11.1	14.3	12.7	18.9
C6L	90	All Materials	8	10	6.4	6.6	6.8	12.1	2.9	25.6	54.2	14.3	14.3	17.5	12.7	15.9	14.3	20.5
C6L	90	All Materials	8	11	6.4	6.6	6.8	12.1	2.9	27.2	55.8	15.9	15.9	19.1	14.3	17.5	15.9	22.1
C6L	90	All Materials	8	12	6.4	6.6	6.8	12.1	2.9	28.8	57.4	17.5	17.5	20.6	15.9	19.0	17.5	23.6
C6L	90	All Materials	8	13	6.4	6.6	6.8	12.1	2.9	30.3	59.0	19.1	19.1	22.2	17.5	20.6	19.1	25.2
C6L	90	All Materials	8	14	6.4	6.6	6.8	12.1	2.9	31.9	60.6	20.6	20.6	23.8	19.0	22.2	20.6	26.8
C6L	90	All Materials	8	15	6.4	6.6	6.8	12.1	2.9	33.5	62.2	22.2	22.2	25.4	20.6	23.8	22.2	28.4
C6L	90	All Materials	8	16	6.4	6.6	6.8	12.1	2.9	35.1	63.7	23.8	23.8	27.0	22.2	25.4	23.8	30.0
C6L	90	All Materials	8	17	6.4	6.6	6.8	12.1	2.9	36.7	65.3	25.4	25.4	28.6	23.8	27.0	25.4	31.6
C6L	90	All Materials	8	18	6.4	6.6	6.8	12.1	2.9	38.3	66.9	27.0	27.0	30.2	25.4	28.6	27.0	33.2
C6L	90	All Materials	8	19	6.4	6.6	6.8	12.1	2.9	39.9	68.5	28.6	28.6	31.8	27.0	30.2	28.6	34.8
C6L	90	All Materials	8	20	6.4	6.6	6.8	12.1	2.9	41.5	70.1	30.2	30.2	33.3	28.6	31.7	30.2	36.3
C6L	90	All Materials	8	21	6.4	6.6	6.8	12.1	2.9	43.0	71.7	31.8	31.8	34.9	30.2	33.3	31.8	37.9
C6L	90	All Materials	8	22	6.4	6.6	6.8	12.1	2.9	44.6	73.3	33.3	33.3	36.5	31.7	34.9	33.3	39.5
C6L	90	All Materials	8	23	6.4	6.6	6.8	12.1	2.9	46.2	74.9	34.9	34.9	38.1	33.3	36.5	34.9	41.1
C6L	90	All Materials	8	24	6.4	6.6	6.8	12.1	2.9	47.8	76.4	36.5	36.5	39.7	34.9	38.1	36.5	42.7
C6L	90	All Materials	8	25	6.4	6.6	6.8	12.1	2.9	49.4	78.0	38.1	38.1	41.3	36.5	39.7	38.1	44.3
C6L	90	All Materials	8	26	6.4	6.6	6.8	12.1	2.9	51.0	79.6	39.7	39.7	42.9	38.1	41.3	39.7	45.9
C6L	90	All Materials	8	27	6.4	6.6	6.8	12.1	2.9	52.6	81.2	41.3	41.3	44.5	39.7	42.9	41.3	47.5
C6L	90	All Materials	8	28	6.4	6.6	6.8	12.1	2.9	54.2	82.8	42.9	42.9	46.0	41.3	44.4	42.9	49.0
C6L	90	All Materials	8	29	6.4	6.6	6.8	12.1	2.9	55.7	84.4	44.5	44.5	47.6	42.9	46.0	44.5	50.6
C6L	90	All Materials	8	30	6.4	6.6	6.8	12.1	2.9	57.3	86.0	46.0	46.0	49.2	44.4	47.6	46.0	52.2
C6L	90	All Materials	8	31	6.4	6.6	6.8	12.1	2.9	58.9	87.6	47.6	47.6	50.8	46.0	49.2	47.6	53.8
C6L	90	All Materials	8	32	6.4	6.6	6.8	12.1	2.9	60.5	89.1	49.2	49.2	52.4	47.6	50.8	49.2	55.4
C6L	90	All Materials	10	4	7.9	8.2	8.3	15.1	3.6	20.9	53.0	4.3	3.2	9.5	1.2	7.5	3.2	12.7
C6L	90	All Materials	10	6	7.9	8.2	8.3	15.1	3.6	24.1	55.0	6.4	6.4	12.7	4.4	10.7	6.4	15.9
C6L	90	All Materials	10	8	7.9	8.2	8.3	15.1	3.6	27.2	58.2	9.5	9.5	15.9	7.5	13.9	9.5	19.1
C6L	90	All Materials	10	10	7.9	8.2	8.3	15.1	3.6	30.4	61.4	12.7	12.7	19.1	10.7	17.1	12.7	22.2
C6L	90	All Materials	10	12	7.9	8.2	8.3	15.1	3.6	33.6	64.6	15.9	15.9	22.2	13.9	20.2	15.9	25.4
C6L	90	All Materials	10	14	7.9	8.2	8.3	15.1	3.6	36.8	67.7	19.1	19.1	25.4	17.1	23.4	19.1	28.6
C6L	90	All Materials	10	16	7.9	8.2	8.3	15.1	3.6	39.9	70.9	22.2	22.2	28.6	20.2	26.6	22.2	31.8
C6L	90	All Materials	10	18	7.9	8.2	8.3	15.1	3.6	43.1	74.1	25.4	25.4	31.8	23.4	29.8	25.4	34.9
C6L	90	All Materials	10	20	7.9	8.2	8.3	15.1	3.6	46.3	77.3	28.6	28.6	34.9	26.6	32.9	28.6	38.1
C6L	90	All Materials	10	22	7.9	8.2	8.3	15.1	3.6	49.5	80.4	31.8	31.8	38.1	29.8	36.1	31.8	41.3
C6L	90	All Materials	10	24	7.9	8.2	8.3	15.1	3.6	52.6	83.6	34.9	34.9	41.3	32.9	39.3	34.9	44.5
C6L	90	All Materials	10	26	7.9	8.2	8.3	15.1	3.6	55.8	86.8	38.1	38.1	44.5	36.1	42.5	38.1	47.6

# HUCK® INTERACTIVE CD ROM : DIMENSIONS

## C6L

Family	Headstyle	Material	Diameter	Grip	A Nominal Dia mm	Min Hole Size mm	Max Hole Size mm	Max B mm	Max C mm	Max E mm	Max D mm	Nominal F mm	LC/2LC Min Grip mm	LC/2LC Max Grip mm	3LC Min Grip mm	3LC Max Grip mm	8LC Min Grip mm	8LC Max Grip mm
C6L	90	All Materials	10	28	7.9	8.2	8.3	15.1	3.6	59.0	90.0	41.3	41.3	47.6	39.3	45.6	41.3	50.8
C6L	90	All Materials	10	30	7.9	8.2	8.3	15.1	3.6	62.2	93.1	44.5	44.5	50.8	42.5	48.8	44.5	54.0
C6L	90	All Materials	10	32	7.9	8.2	8.3	15.1	3.6	64.2	96.3	47.6	47.6	54.0	45.6	52.0	47.6	57.2
C6L	90	All Materials	12	6	9.5	9.8	9.9	18.1	4.3	24.8	60.6	6.4	6.4	12.7	4.0	10.3	6.4	16.3
C6L	90	All Materials	12	8	9.5	9.8	9.9	18.1	4.3	28.0	63.8	9.5	9.5	15.9	7.1	13.5	9.5	19.5
C6L	90	All Materials	12	10	9.5	9.8	9.9	18.1	4.3	31.2	66.9	12.7	12.7	19.1	10.3	16.7	12.7	22.7
C6L	90	All Materials	12	12	9.5	9.8	9.9	18.1	4.3	34.4	70.1	15.9	15.9	22.2	13.5	19.8	15.9	25.9
C6L	90	All Materials	12	14	9.5	9.8	9.9	18.1	4.3	37.5	73.3	19.1	19.1	25.4	16.7	23.0	19.1	29.0
C6L	90	All Materials	12	16	9.5	9.8	9.9	18.1	4.3	40.7	76.5	22.2	22.2	28.6	19.8	26.2	22.2	32.2
C6L	90	All Materials	12	18	9.5	9.8	9.9	18.1	4.3	43.9	79.6	25.4	25.4	31.8	23.0	29.4	25.4	35.4
C6L	90	All Materials	12	20	9.5	9.8	9.9	18.1	4.3	47.1	82.8	28.6	28.6	34.9	26.2	32.5	28.6	38.6
C6L	90	All Materials	12	22	9.5	9.8	9.9	18.1	4.3	50.2	86.0	31.8	31.8	38.1	29.4	35.7	31.8	41.7
C6L	90	All Materials	12	24	9.5	9.8	9.9	18.1	4.3	53.4	89.2	34.9	34.9	41.3	32.5	38.9	34.9	44.9
C6L	90	All Materials	12	26	9.5	9.8	9.9	18.1	4.3	56.6	92.3	38.1	38.1	44.5	35.7	42.1	38.1	48.1
C6L	90	All Materials	12	28	9.5	9.8	9.9	18.1	4.3	59.8	95.5	41.3	41.3	47.6	38.9	45.2	41.3	51.3
C6L	90	All Materials	12	30	9.5	9.8	9.9	18.1	4.3	62.9	98.7	44.5	44.5	50.8	42.1	48.4	44.5	54.4
C6L	90	All Materials	12	32	9.5	9.8	9.9	18.1	4.3	66.1	101.9	47.6	47.6	54.0	45.2	51.6	47.6	57.6

# HUCK® INTERACTIVE CD ROM : STRENGTHS & INSTALLED DIMENSIONS

## C6L

Unless stated all values are minimum

Product		SHEAR		TENSILE - Bare		TENSILE - PLATED		TENSILE - BRIGHT DIP		CLAMP		Pin Retention		TYPICAL SHEAR		TYPICAL TENSILE - PLATED		TYPICAL Pin Retention		TYPICAL CLAMP		R Max	S Max	T Min	U Max	Collar Type
		Newtons	kN	Newtons	kN	Newtons	kN	Newtons	kN	Newtons	kN	Newtons	kN	Newtons	kN	Newtons	kN	Newtons	kN	Newtons	kN	Newtons	kN	mm	mm	
C6LB-R6	All grip sizes	7673		7340		6228		0	0	4559		0	0	0	0	0	0	0	0	0	0	2.0	3.2	4.4	7.0	LC and 3 LC collars
C6LB-R8	All grip sizes	13567	13.6	13345	13.3	11343	11.3	0	0	8029	0	0	0	0	0	0	0	0	0	0	0	2.0	4.0	6.4	9.3	LC and 3 LC collars
C6LB-R10	All grip sizes	21018	21	20462	20.5	17393	17.4	0	0	12500	12.5	0	0	0	0	0	0	0	0	0	0	Consult Huck	5.6	7.1	11.5	LC and 3 LC collars
C6LB-R12	All grip sizes	30359	30.4	28913	28.9	25021	25	0	0	17882	17.9	0	0	0	0	0	0	0	0	0	0	Consult Huck	7.1	8.7	13.3	LC and 3 LC collars
C6LB-C6	All grip sizes	4671		4448		0		4003		2447		0	0	0	0	0	0	0	0	0	0	2.0	3.2	4.4	7.0	LC and 3 LC collars
C6LB-C8	All grip sizes	8340		8007		0		7206		4226		0	0	0	0	0	0	0	0	0	0	2.0	4.0	6.4	9.3	LC and 3 LC collars
C6LB-C10	All grip sizes	13011	13	12677	12.7	0		11410	11.4	6672		0	0	0	0	0	0	0	0	0	0	Consult Huck	5.6	7.1	11.5	LC and 3 LC collars
C6LB-C12	All grip sizes	18683	18.7	18683	18.7	0		16814	16.8	9786		0	0	0	0	0	0	0	0	0	0	Consult Huck	7.1	8.7	13.3	LC and 3 LC collars
C6LB-F6	All grip sizes	3447		2358		0		2122		1557		0	0	0	0	0	0	0	0	0	0	2.0	3.2	4.4	7.0	LC and 3 LC collars
C6LB-F8	All grip sizes	6116		4337		0		3901		2758		0	0	0	0	0	0	0	0	0	0	2.0	4.0	6.4	9.3	LC and 3 LC collars
C6LB-F10	All grip sizes	9452		6895		0		6205		4293		0	0	0	0	0	0	0	0	0	0	Consult Huck	5.6	7.1	11.5	LC and 3 LC collars
C6LB-F12	All grip sizes	13567	13.6	10676	10.7	0		9608		6139		0	0	0	0	0	0	0	0	0	0	Consult Huck	7.1	8.7	13.3	LC and 3 LC collars
C6LB-U6	All grip sizes	8896		6472		0		0	0	4559		0	0	0	0	0	0	0	0	0	0	2.0	3.2	4.4	7.0	LC and 3 LC collars
C6LB-U8	All grip sizes	15791	15.8	16681	16.7	0		0	0	8029		0	0	0	0	0	0	0	0	0	0	2.0	4.0	6.4	9.3	LC and 3 LC collars
C6LB-U10	All grip sizes	24576	24.6	18905	18.9	0		0	0	12500	12.5	0	0	0	0	0	0	0	0	0	0	Consult Huck	5.6	7.1	11.5	LC and 3 LC collars
C6LB-U12	All grip sizes	35363	35.4	27134	27.1	0		0	0	17882	17.9	0	0	0	0	0	0	0	0	0	0	Consult Huck	7.1	8.7	13.3	LC and 3 LC collars
C6LT-R6	All grip sizes	7673		7340		6228		0	0	4559		0	0	0	0	0	0	0	0	0	0	2.0	3.2	4.4	7.0	LC and 3 LC collars
C6LT-R8	All grip sizes	13567	13.6	13345	13.3	11343	11.3	0	0	8029	0	0	0	0	0	0	0	0	0	0	0	2.0	4.0	6.4	9.3	LC and 3 LC collars
C6LT-R10	All grip sizes	21018	21	20462	20.5	17393	17.4	0	0	12500	12.5	0	0	0	0	0	0	0	0	0	0	Consult Huck	5.6	7.1	11.5	LC and 3 LC collars
C6LT-R12	All grip sizes	30359	30.4	28913	28.9	25021	25	0	0	17882	17.9	0	0	0	0	0	0	0	0	0	0	Consult Huck	7.1	8.7	13.3	LC and 3 LC collars
C6LT-C6	All grip sizes	4671		4448		0		4003		2447		0	0	0	0	0	0	0	0	0	0	2.0	3.2	4.4	7.0	LC and 3 LC collars
C6LT-C8	All grip sizes	8340		8007		0		7206		4226		0	0	0	0	0	0	0	0	0	0	2.0	4.0	6.4	9.3	LC and 3 LC collars
C6LT-C10	All grip sizes	13011	13	12677	12.7	0		11410	11.4	6672		0	0	0	0	0	0	0	0	0	0	Consult Huck	5.6	7.1	11.5	LC and 3 LC collars
C6LT-C12	All grip sizes	18683	18.7	18683	18.7	0		16814	16.8	9786		0	0	0	0	0	0	0	0	0	0	Consult Huck	7.1	8.7	13.3	LC and 3 LC collars
C6LT-F6	All grip sizes	3447		2358		0		2122		1557		0	0	0	0	0	0	0	0	0	0	2.0	3.2	4.4	7.0	LC and 3 LC collars
C6LT-F8	All grip sizes	6116		4337		0		3901		2758		0	0	0	0	0	0	0	0	0	0	2.0	4.0	6.4	9.3	LC and 3 LC collars
C6LT-F10	All grip sizes	9452		6895		0		6205		4293		0	0	0	0	0	0	0	0	0	0	Consult Huck	5.6	7.1	11.5	LC and 3 LC collars
C6LT-F12	All grip sizes	13567	13.6	10676	10.7	0		9608		6139		0	0	0	0	0	0	0	0	0	0	Consult Huck	7.1	8.7	13.3	LC and 3 LC collars
C6LT-U6	All grip sizes	8896		6472		0		0	0	4559		0	0	0	0	0	0	0	0	0	0	2.0	3.2	4.4	7.0	LC and 3 LC collars
C6LT-U8	All grip sizes	15791	15.8	16681	16.7	0		0	0	8029		0	0	0	0	0	0	0	0	0	0	2.0	4.0	6.4	9.3	LC and 3 LC collars
C6LT-U10	All grip sizes	24576	24.6	18905	18.9	0		0	0	12500	12.5	0	0	0	0	0	0	0	0	0	0	Consult Huck	5.6	7.1	11.5	LC and 3 LC collars
C6LT-U12	All grip sizes	35363	35.4	27134	27.1	0		0	0	17882	17.9	0	0	0	0	0	0	0	0	0	0	Consult Huck	7.1	8.7	13.3	LC and 3 LC collars
C6L90-R6	All grip sizes	7673		7340		6228		0	0	4559		0	0	0	0	0	0	0	0	0	0	2.0	3.2	4.4	7.0	LC and 3 LC collars
C6L90-R8	All grip sizes	13567	13.6	13345	13.3	11343	11.3	0	0	8029	0	0	0	0	0	0	0	0	0	0	0	2.0	4.0	6.4	9.3	LC and 3 LC collars
C6L90-R10	All grip sizes	21018	21	20462	20.5	17393	17.4	0	0	12500	12.5	0	0	0	0	0	0	0	0	0	0	Consult Huck	5.6	7.1	11.5	LC and 3 LC collars
C6L90-R12	All grip sizes	30359	30.4	28913	28.9	25021	25	0	0	17882	17.9	0	0	0	0	0	0	0	0	0	0	Consult Huck	7.1	8.7	13.3	LC and 3 LC collars
C6L90-C6	All grip sizes	4671		4448		0		4003		2447		0	0	0	0	0	0	0	0	0	0	2.0	3.2	4.4	7.0	LC and 3 LC collars
C6L90-C8	All grip sizes	8340		8007		0		7206		4226		0	0	0	0	0	0	0	0	0	0	2.0	4.0	6.4	9.3	LC and 3 LC collars
C6L90-C10	All grip sizes	13011	13	12677	12.7	0		11410	11.4	6672		0	0	0	0	0	0	0	0	0	0	Consult Huck	5.6	7.1	11.5	LC and 3 LC collars
C6L90-C12	All grip sizes	18683	18.7	18683	18.7	0		16814	16.8	9786		0	0	0	0	0	0	0	0	0	0	Consult Huck	7.1	8.7	13.3	LC and 3 LC collars
C6L90-F6	All grip sizes	3447		2358		0		2122		1557		0	0	0	0	0	0	0	0	0	0	2.0	3.2	4.4	7.0	LC and 3 LC collars
C6L90-F8	All grip sizes	6116		4337		0		3901		2758		0	0	0	0	0	0	0	0	0	0	2.0	4.0	6.4	9.3	LC and 3 LC collars
C6L90-F10	All grip sizes	9452		6895		0		6205		4293		0	0	0	0	0	0	0	0	0	0	Consult Huck	5.6	7.1	11.5	LC and 3 LC collars
C6L90-F12-6	All grip sizes	13567	13.6	10676	10.7	0		9608		6139		0	0	0	0	0	0	0	0	0	0	Consult Huck	7.1	8.7	13.3	LC and 3 LC collars
C6L90-U6	All grip sizes	8896		6472		0		0	0	4559		0	0	0	0	0	0	0	0	0	0	2.0	3.2	4.4	7.0	LC and 3 LC collars
C6L90-U8	All grip sizes	15791	15.8	16681	16.7	0		0	0	8029		0	0	0	0	0	0	0	0	0	0	2.0	4.0	6.4	9.3	LC and 3 LC collars
C6L90-U10	All grip sizes	24576	24.6	18905	18.9	0		0	0	12500	12.5	0	0	0	0	0	0	0	0	0	0	Consult Huck	5.6	7.1	11.5	LC and 3 LC collars
C6L90-U12	All grip sizes	35363	35.4	27134	27.1	0		0	0	17882	17.9	0	0	0	0	0	0	0	0	0	0	Consult Huck	7.1	8.7	13.3	LC and 3 LC collars



# HUCK® INTERACTIVE CD ROM : COLLARS

## C6L

Type	Standard Part	Material	Diameter	Part Number	K Diameter Max mm	L Max mm
2	LC	R	6	2LC-R6	8.1	6.2
2	LC	F	6	2LC-F6	8.1	6.2
2	LC	I	6	2LC-I6	8.1	6.2
2	LC	2CU	6	2LC-2CU6	8.1	6.2
2	LC	R	8	2LC-R8	10.6	8.1
2	LC	F	8	2LC-F8	10.6	8.1
2	LC	I	8	2LC-I8	10.6	8.1
2	LC	2CU	8	2LC-2CU8	10.6	8.1
2	LC	R	10	2LC-R10	12.8	9.5
2	LC	F	10	2LC-F10	12.8	9.5
2	LC	I	10	2LC-I10	12.8	9.5
2	LC	2CU	10	2LC-2CU10	12.8	9.5
2	LC	R	12	2LC-R12	15.4	11.9
2	LC	F	12	2LC-F12	15.4	11.9
2	LC	I	12	2LC-I12	15.4	11.9
2	LC	2CU	12	2LC-2CU12	15.4	11.9
8	LC	R	6	8LC-R6	8.1	4.1
8	LC	F	6	8LC-F6	8.1	4.1
8	LC	I	6	8LC-I6	8.1	4.1
8	LC	2CU	6	8LC-2CU6	8.1	4.1
8	LC	R	8	8LC-R8	10.6	5.1
8	LC	F	8	8LC-F8	10.6	5.1
8	LC	I	8	8LC-I8	10.6	5.1
8	LC	2CU	8	8LC-2CU8	10.6	5.1
8	LC	R	10	8LC-R10	12.8	6.5
8	LC	F	10	8LC-F10	12.8	6.5
8	LC	I	10	8LC-I10	12.8	6.5
8	LC	2CU	10	8LC-2CU10	12.8	6.5
8	LC	R	12	8LC-R12	15.4	7.9
8	LC	F	12	8LC-F12	15.4	7.9
8	LC	I	12	8LC-I12	15.4	7.9
8	LC	2CU	12	8LC-2CU12	15.4	7.9
3	LC	R	6	3LC-R6	10.0	7.4
3	LC	F	6	3LC-F6	10.0	7.4
3	LC	I	6	3LC-I6	10.0	7.4
3	LC	2CU	6	3LC-2CU6	10.0	7.4
3	LC	R	8	3LC-R8	13.2	9.6
3	LC	F	8	3LC-F8	13.2	9.6
3	LC	I	8	3LC-I8	13.2	9.6
3	LC	2CU	8	3LC-2CU8	13.2	9.6
3	LC	R	10	3LC-R10	16.4	10.8
3	LC	F	10	3LC-F10	16.4	10.8
3	LC	I	10	3LC-I10	16.4	10.8
3	LC	2CU	10	3LC-2CU10	16.4	10.8
3	LC	R	12	3LC-R12	19.7	13.5
3	LC	F	12	3LC-F12	19.7	13.5
3	LC	I	12	3LC-I12	19.7	13.5
3	LC	2CU	12	3LC-2CU12	19.7	13.5

# HUCK® INTERACTIVE CD ROM : HEADSTYLES

## ALL PRODUCTS

Name	Family	Part	Type	Description
C120L	C120L	Collar	2	Standard
C120L	C120L	Collar	3	Flanged
C120L	C120L	Collar	8	Low Profile
C120L	C120L	Pin	B	Brazier
C120L	C120L	Pin	T	Truss
C120L	C120L	Pin	90	Countersunk
C6L	C6L	Collar	2	Standard
C6L	C6L	Collar	3	Flanged
C6L	C6L	Collar	8	Low Profile
C6L	C6L	Pin	B	Brazier
C6L	C6L	Pin	T	Truss
C6L	C6L	Pin	90	Countersunk
Magna-Grip	MGP	Pin	B	Button
Magna-Grip	MGP	Pin	T	Truss
Magna-Grip	MGP	Pin	30	Broad Truss
Magna-Grip	MGP	Pin	90	90 Degree Countersunk
Magna-Grip	MGP	Pin	98T	Rivet
Magna-Grip	MG	Collar	C	Standard Flange
Magna-Grip	MG	Collar	CS	Medium Flange
Magna-Grip	MG	Collar	CW	Wide Flange
Hucktainer	HLP	Pin	P	Standard Low Profile
Hucktainer	HLP	Pin	E	Encapsulated
Hucktainer	HLP	Pin	M	Medium sized encapsulated
Hucktainer	HLP	Collar	S	Wide bearing sleeve
Hucktainer	HLP	Collar	SM	Medium bearing sleeve
Hucktainer	HLP	Collar	SC	Clearance sleeve
Hucktainer	HLP	Collar	SGC	Short grip clearance sleeve
Hucktainer	HLP	Collar	SGM	Short grip medium sleeve
Hucktainer	HLP	Collar	SG	Short grip wide bearing sleeve
C50L	C50L	Pin	R	Round
C50L	C50L	Pin	T	Truss
C50L	C50L	Pin	90	90 Degree Countersunk
C50L	C50L	Collar	LC	Standard
C50L	C50L	Collar	3LC	Flanged

Name	Family	Part	Type	Description
C50L	C50L	Collar	8LC	Low Profile
HP8	HP8	Pin	F	Flanged
HP8	HP	Collar	BF	Flanged
Huck-Fit	MHF	Pin	F	Flanged
Huck-Fit	MHF	Pin	P8	Freightliner
Huck-Fit	MH	Collar	CH	Threaded Hex Flange
Huck-Spin	MHS	Collar	H	Threaded Hex Flange
Huck-Spin	MHS	Collar	CF	Round Flange
Huck-Spin	MHS	Pin	F	Hexagonal
Huck-Spin	MHS	Pin	PF	Round
Small diameter Huck-Spin	HS2	Pin	B	Brazied
Small diameter Huck-Spin	HS5	Pin	B	Brazied
Small diameter Huck-Spin	HS8	Pin	B	Brazied
Small diameter Huck-Spin	HS2	Pin	90	90 Degree Countersunk
Small diameter Huck-Spin	HS5	Pin	90	90 Degree Countersunk
Small diameter Huck-Spin	HS2	Collar	F	Flanged
Small diameter Huck-Spin	HS5	Collar	F	Flanged
Small diameter Huck-Spin	HS8	Collar	F	Flanged
Magna-Lok	MGL	Blind	P	Protunding
Magna-Lok	MGL	Blind	T	Truss
Magna-Lok	MGL	Blind	100	100 Degree Countersunk
Magna-Bulb	MB	Blind	P	Protunding
Auto-Bulb	AB	Blind	P	Protunding
Magna-Tite	MT	Blind	P	Protunding
Magna-Tite	MT	Blind	V	100 Degree Oval
Magna-Tite	MT	Blind	S	Shavable
Magna-Tite	MT	Blind	LP	Low Profile
Huck-Lok	HKL	Blind	P	Protunding
FloorTight	PMF	Blind		Installation in Plywood
FloorTight	PMF	Blind		Installation in Plymetal

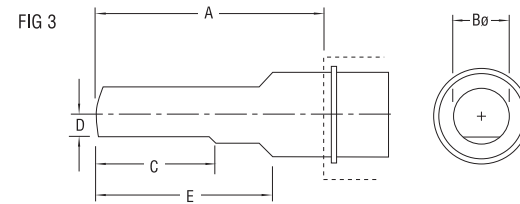
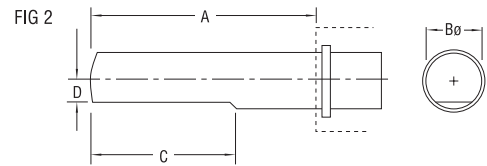
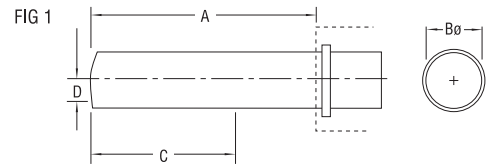
\*BOM does not have a headstyle

# HUCK® INTERACTIVE CD ROM : MATERIALS & COATINGS

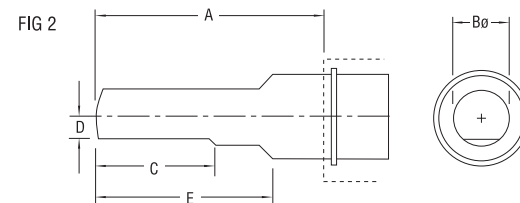
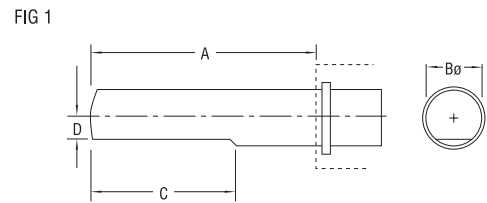
## ALL PRODUCTS

Family	Part	Material Code	Material	Standard Coating	Standard Coating Code	Tab-Lok Available
Auto-Bulb	Pin	R	Medium Carbon Steel	"Zinc plate, gold chromate"		
Auto-Bulb	Sleeve	R	Low Carbon Steel	"Zinc plate, gold chromate"		
BOM	Pin - 4.8mm to 7.9mm diameter	R	Carbon Steel	Bare		
BOM	Pin - 9.5mm to 19.1mm diameter	R	Alloy Steel	Bare		
BOM	Sleeve	R	Carbon Steel	Zinc plating per spec ASTM B633 or ASTM B695. Meets specification of QQ-Z-235 and MIL-C-81562		
C120L	Collar	R/2R	Low Carbon Steel	"Zinc plate, clear chromate"	G	
C120L	Pin	R	Carbon Steel/Carbon Boron Steel	"Zinc plate, clear chromate"	G	
C50L	Collar	2CU	Stainless Steel	Pasivated	-	Yes
C50L	Collar	2R	Low Carbon Steel	"Zinc plate, clear chromate"	G	Yes
C50L	Collar	F	6061 Aged Aluminium Alloy	Pasivated	-	Yes
C50L	Collar	I	6061 Aluminium Alloy	Pasivated	-	Yes
C50L	Pin	BR	Carbon Steel/Carbon Boron Steel	Bare	-	
C50L	Pin	C	2024 Aluminium Alloy	Pasivated	-	
C50L	Pin	F	6061 Aluminium Alloy	Pasivated	-	
C50L	Pin	U	Stainless Steel	Pasivated	-	
C6L	Collar	2CU	Stainless Steel	"Zinc plate, clear chromate"	G	
C6L	Collar	F	5062 Aluminium Alloy	"Zinc plate, clear chromate"	G	
C6L	Collar	I	6061 Aluminium Alloy	"Zinc plate, clear chromate"	G	
C6L	Collar	R/2R	Low Carbon Steel	"Zinc plate, clear chromate"	G	
C6L	Pin	C	Aluminium Alloy	"Zinc plate, clear chromate"	G	
C6L	Pin	F	Aluminium Alloy	"Zinc plate, clear chromate"	G	
C6L	Pin	R	Carbon Steel/Carbon Boron Steel	"Zinc plate, clear chromate"	G	
C6L	Pin	U	Stainless Steel	"Zinc plate, clear chromate"	G	
FloorTight	Pin	R	Steel	Black		
FloorTight	Sleeve	R	Steel	Zinc electroplate eith gold chromate		
HP8	Collar	R	Low Carbon Steel	"Zinc plate, clear chromate"	G	Yes
HP8	Pin	DT	Medium Carbon Steel	Bare	-	
Huck-Fit	Collar		Low Carbon Steel	"Zinc plate, gold chromate"	U	Yes
Huck-Fit	Pin	DT	Carbon Steel/Carbon Boron Steel	Bare	-	
HuckLok	Pin	R	Medium Carbon Steel	"Zinc plate, clear chromate"		
HuckLok	Sleeve	R	Low Carbon Steel	"Zinc plate, clear chromate"		
Huck-Spin	Collar	R	Low Carbon Steel	"Zinc plate, gold chromate"	U	
Huck-Spin	Pin	DT	Carbon Steel/Carbon Boron Steel	Consult Huck	-	
Small Diameter Huck-Spin	Collar	R	Low Carbon Steel	Consult Huck		
Small Diameter Huck-Spin	Pin	R	Low Carbon Steel	Consult Huck		
Small Diameter Huck-Spin	Pin	DT	Carbon Steel/Carbon Boron Steel	Consult Huck		
Hucktainer Plus	Collar	R	Low Carbon Steel	"Zinc plate, gold chromate"	U	
Hucktainer Plus	Pin	R	Low Carbon Steel	"Zinc plate, clear chromate"	G	
Magna-Bulb	Pin	R	Medium Carbon Steel	"Zinc plate, gold chromate"		
Magna-Bulb	Sleeve	R	Low Carbon Steel	"Zinc plate, gold chromate"		
Magna-Grip	Collar	F	7075-T6 Aluminium Alloy		-	Yes
Magna-Grip	Collar	R	Low Carbon Steel	"Zinc plate, clear chromate"	G	Yes
Magna-Grip	Pin	E	6061 Aluminium Alloy		-	
Magna-Grip	Pin	R	Carbon Steel	"Zinc plate, clear chromate"	G	
Magna-Lok	Pin	B	7075 Aluminium Alloy	Gold chromate		
Magna-Lok	Pin	R	Medium Carbon Steel	"Zinc plate, gold chromate"		
Magna-Lok	Pin	U	Stainless Steel	Pasivated		
Magna-Lok	Sleeve	B	5056 Aluminium Alloy	Clear chromate		
Magna-Lok	Sleeve	R	Low Carbon Steel	"Zinc plate, clear chromate"		
Magna-Lok	Sleeve	U	Stainless Steel	Pasivated		
Magna-Tite	Pin	B	Aluminum Alloy	Consult Huck		
Magna-Tite	Sleeve	B	Aluminum Alloy	Consult Huck		

# C6L + 3LC COLLAR



# C6L + 8LC COLLAR - PLUS C120L



# HUCK® INTERACTIVE CD ROM : TOOLING MATRIX

## C6L + LC OR 3LC

Dia.	Nose Assembly Options		Nose Assembly Dimensions					Pneumatic Tool Options					
	FOCUS	Non-FOCUS	Fig.	A mm	B mm	C mm	D mm	E mm	FOCUS		Non-FOCUS		
	1	2			ø				1	2	3	4	5
6	99-3003		1	51.5	19.1	-	-	-	LH-224		2025	2025B	2025V
	99-3003L		1	51.5	19.1	-	-	-	2025LB		2025L		
		99-3004	1	150.5	19.1	-	-	-	LH-224		2025	2025B	2025V
		99-2558	3	58.5	17.9	44.0	8.0	44.0	255	256	245	246	
8		99-2559	3	121.5	17.9	107.5	8.0	107.5	255	256	245	246	
	99-3006		1	53.0	19.1	-	-	-	LH-224		2025	2025B	2025V
	99-3006L		1	53.0	19.1	-	-	-	2025LB		2025L		
		99-3007	1	152.5	19.1	-	-	-	LH-224		2025	2025B	2025V
		99-2564	3	58.0	19.3	43.5	8.6	43.5	255	256	245	246	
	99-2565	3	121.5	19.3	107.0	8.6	107.0	255	256	245	246		
10	99-99-245		2	68.5	26.9	53.5	12.2	-	255	256	245	246	
12	99-100-245		2	67.0	26.9	53.5	12.2	-	255	256	245	246	

Dia.	Nose Assembly Options		Nose Assembly Dimensions					Hydraulic Tool Options				Powerig Options					Hose Set Options			
	FOCUS	Non-FOCUS	Fig.	A mm	B mm	C mm	D mm	E mm	FOCUS		Non-FOCUS		FOCUS					FOCUS	Non-FOCUS	
	1	2			ø				1	2	3	4	1	2	3	4	5	1	2	
6	99-3003		1	51.5	19.1	-	-	-			2480			HK432-2 Series	HK3413 Series	HP74 Series	HP116 Series	HK4245 Series	HS - MCE - 10 (Length 10 Metres)	*
	99-3003L		1	51.5	19.1	-	-	-	2480L					HK432-2 Series	HK3413 Series	HP74 Series	HP116 Series	HK4245 Series	HS - MCE - 10 (Length 10 Metres)	*
		99-3004	1	150.5	19.1	-	-	-			2480			HK432-2 Series	HK3413 Series	HP74 Series	HP116 Series	HK4245 Series	HS - MCE - 10 (Length 10 Metres)	*
		99-2558	3	58.5	17.9	44.0	8.0	44.0	2580	2503				HK432-2 Series	HK3413 Series	HP74 Series	HP116 Series	HK4245 Series	HS - MCE - 10 (Length 10 Metres)	*
8	99-3006		1	53.0	19.1	-	-	-			2480			HK432-2 Series	HK3413 Series	HP74 Series	HP116 Series	HK4245 Series	HS - MCE - 10 (Length 10 Metres)	*
	99-3006L		1	53.0	19.1	-	-	-	2480L					HK432-2 Series	HK3413 Series	HP74 Series	HP116 Series	HK4245 Series	HS - MCE - 10 (Length 10 Metres)	*
		99-3007	1	152.5	19.1	-	-	-			2480			HK432-2 Series	HK3413 Series	HP74 Series	HP116 Series	HK4245 Series	HS - MCE - 10 (Length 10 Metres)	*
	99-2564	3	58.0	19.3	43.5	8.6	43.5	2580	2503				HK432-2 Series	HK3413 Series	HP74 Series	HP116 Series	HK4245 Series	HS - MCE - 10 (Length 10 Metres)	*	
10	99-99-245		2	68.5	26.9	53.5	12.2	-	2580	2503				HK432-2 Series	HK3413 Series	HP74 Series	HP116 Series	HK4245 Series	HS - MCE - 10 (Length 10 Metres)	*
12	99-100-245		2	67.0	26.9	53.5	12.2	-	2580	2503				HK432-2 Series	HK3413 Series	HP74 Series	HP116 Series	HK4245 Series	HS - MCE - 10 (Length 10 Metres)	*
		99-2663	3	75.0	27.8	54.5	12.7**	61.0			2600			HK432-2 Series	HK3413 Series	HP74 Series	HP116 Series	HK4245 Series	HS - MCE - 10 (Length 10 Metres)	*

\* Contact Huck for availability of other Hose Set lengths.

\*\* (2 FLATS)

# HUCK® INTERACTIVE CD ROM : TOOLING MATRIX

## C6L + 8LC

Dia.	Nose Assembly Options			Nose Assembly Dimensions					Pneumatic Tool Options			
	FOCUS	Non-FOCUS		ø					FOCUS		Non-FOCUS	
	1	2	Fig.	A mm	B mm	C mm	D mm	E mm	1	2	3	4
6		99-2558	2	58.5	17.9	44.0	8.0	44.0	255	256	245	246
		99-2559	2	122.0	17.9	107.5	8.0	107.5	255	256	245	246
8		99-2564	2	58.0	19.3	43.5	8.6	43.5	255	256	245	246
		99-2565	2	121.5	19.3	107.0	8.6	107.0	255	256	245	246
10	99-99-245		1	70.5	26.9	53.5	12.2	-	255	256	245	246
12	99-100-245		1	70.0	26.9	53.5	12.2	-	255	256	245	246

Dia.	Nose Assembly Options			Nose Assembly Dimensions					Hydraulic Tool Options				Powerig Options					Hose Set Options	
	FOCUS	Non-FOCUS		ø					FOCUS		Non-FOCUS		FOCUS					Non-FOCUS	
	1	2	Fig.	A mm	B mm	C mm	D mm	E mm	1	2	3	4	1	2	3	4	5	1	2
6		99-2555	1	47.0	17.9	35.0	8.0	-			2480		HK432-2 Series	HK3413 Series	HP74 Series	HP116 Series	HK4245 Series	HS - 10 - MCE (Length 10 Metres)	*
		99-2556	1	110.5	17.9	98.5	8.0	-			2480		HK432-2 Series	HK3413 Series	HP74 Series	HP116 Series	HK4245 Series	HS - 10 - MCE (Length 10 Metres)	*
		99-2558	2	58.5	17.9	44.0	8.0	44.0	2580	2503			HK432-2 Series	HK3413 Series	HP74 Series	HP116 Series	HK4245 Series	HS - 10 - MCE (Length 10 Metres)	*
		99-2559	2	122.0	17.9	107.5	8.0	107.5	2580	2503			HK432-2 Series	HK3413 Series	HP74 Series	HP116 Series	HK4245 Series	HS - 10 - MCE (Length 10 Metres)	*
8		99-2561	1	47.0	19.3	35.0	8.6	-			2480		HK432-2 Series	HK3413 Series	HP74 Series	HP116 Series	HK4245 Series	HS - 10 - MCE (Length 10 Metres)	*
		99-2562	1	114.0	19.3	98.5	8.6	-			2480		HK432-2 Series	HK3413 Series	HP74 Series	HP116 Series	HK4245 Series	HS - 10 - MCE (Length 10 Metres)	*
		99-2564	2	58.0	19.3	43.5	8.6	43.5	2580	2503			HK432-2 Series	HK3413 Series	HP74 Series	HP116 Series	HK4245 Series	HS - 10 - MCE (Length 10 Metres)	*
		99-2565	2	121.5	19.3	107.0	8.6	107.0	2580	2503			HK432-2 Series	HK3413 Series	HP74 Series	HP116 Series	HK4245 Series	HS - 10 - MCE (Length 10 Metres)	*
10	99-99-245		1	70.5	26.9	53.5	12.2	-	2580	2503			HK432-2 Series	HK3413 Series	HP74 Series	HP116 Series	HK4245 Series	HS - 10 - MCE (Length 10 Metres)	*
12	99-100-245		2	67.0	26.9	53.5	12.2	-	2580	2503			HK432-2 Series	HK3413 Series	HP74 Series	HP116 Series	HK4245 Series	HS - 10 - MCE (Length 10 Metres)	*
		99-2663	2	75.0	27.8	54.5	12.7**	61.0			2600		HK432-2 Series	HK3413 Series	HP74 Series	HP116 Series	HK4245 Series	HS - 10 - MCE (Length 10 Metres)	*

\* Contact Huck for availability of other Hose Set lengths.

\*\* (2 FLATS)